

CSD Lenticular Filter



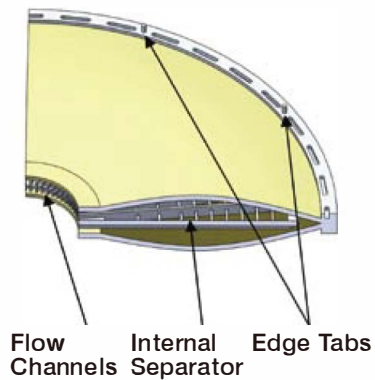
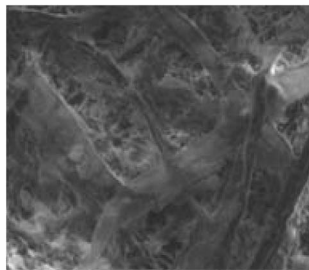
Cobetter CSD series filters use composite material with a high purity Lignocellulose and Inorganic filter aid agent. Its inner crisscrossing three-dimensional structure makes it a depth filter and provides excellent filtration efficiency, high dirty holding capacity and longer life. Filter paper production use supermatic production lines. All raw materials are tested by strict quality control processes, to ensure the filter quality and high performance.

Operating Conditions

Maximum Temperature	80°C
Max. Differential Pressure	2.4bar / 25°C
Flush	Pure water 50L/m ² Flow rate 20 lpm/m ²
Steaming Sterilize(Autoclave)	121°C / 30min

Materials of Construction

Filter Media	Cellulose, Diatomaceous earth
Cage	Polypropylene



Filtration Area

Number of lenses	Filtration area	
	12 " diameter	16 " diameter
7	0.7 m ²	/
9	0.9 m ²	2.1 m ²
12	1.1 m ²	2.8 m ²
14	1.3 m ²	3.2 m ²
15	1.4 m ²	3.5 m ²
16	1.5 m ²	3.7 m ²

Ordering Information

CSD	Removal Ratings	End Cap	Grade	Nominal Length	Number of Lenses	Seal Material	-F
	0004=0.04-0.2 μm	DOE = Double open end	S=Standard	12=12"	S=7 Lenses	S=Silicone	
	0020=0.2-0.4 μm	TC = 222 o-ring/flat cap	P=Pharmaceutical	16=16"	T=12 Lenses	E=EPDM	
	0040=0.4-0.6 μm		F=Process Fluids	30=30"	M=14 Lenses	V=Viton	
	0060=0.6-0.8 μm			40=40"	D=16 Lenses		
	0100=0.8-1.5 μm						
	0150=1.5-3.0 μm						